

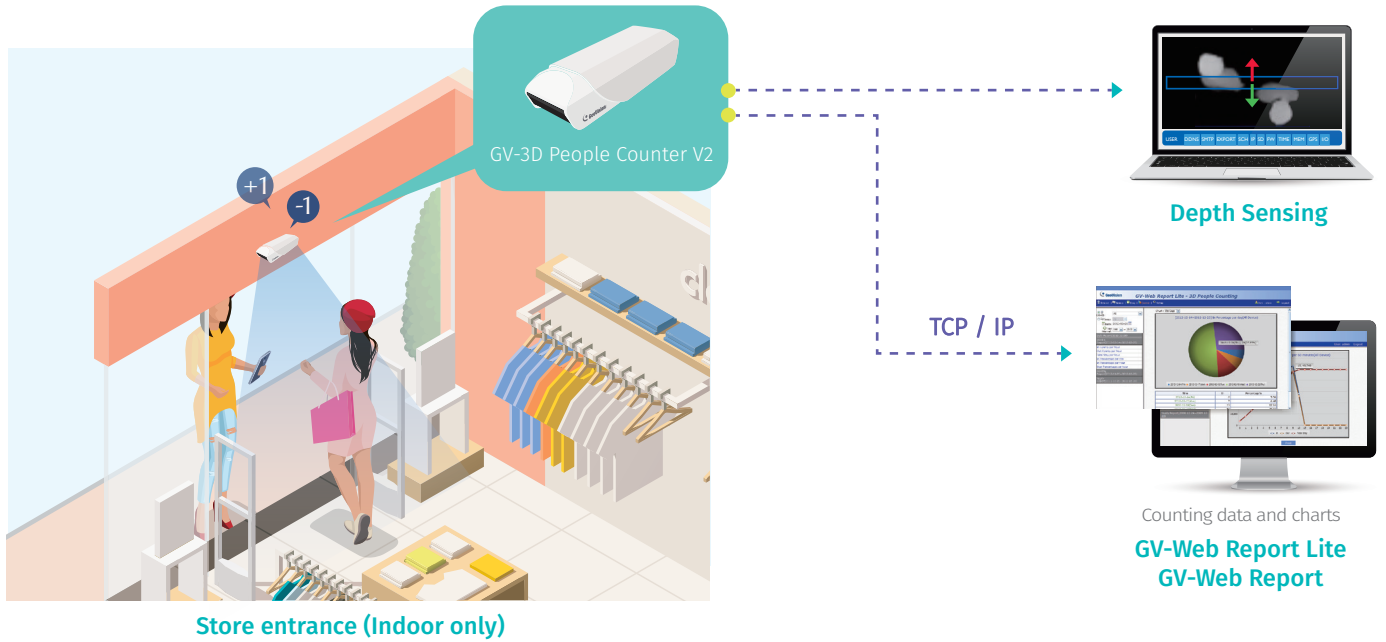


# Your accuracy is our business

- High precision counting accuracy (98%)
- Counts the number of people (In and Out)
- Interface User friendly
- SDHC card supported
- Data compiling and chart analysis on GV-Web Report
- Digital I/O (1In/1Out)
- PoE (IEEE 802.3af)
- Low power consumption
- GPS positioning (optional)



# Application Scenarios



Geovision launches a GV-3D People Counting V2 that is providing 3D depth sensing technology and 3D people counting algorithm to count entering and exiting people at the same time, With 98% counting accuracy rate and a built-in GV-Web Report Lite is able to generate and analyze report for business management and people’s footfall activity in a physical space.

The GV-3D People counting V2 delivers key benefits for the application as following:

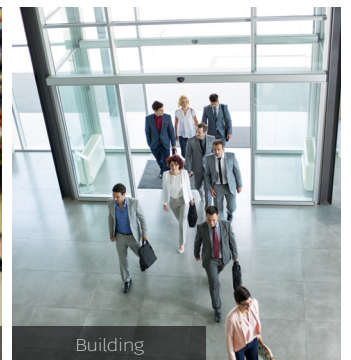
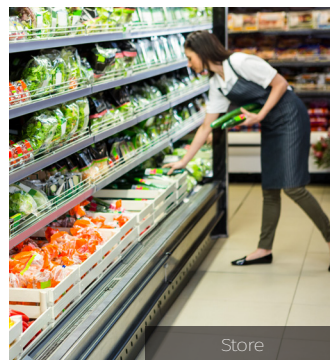
## Retail Store

People counting in the retail stores that can easily collect foot traffic into the store with the store’s business metrics , also analyze business trends.



## Building Capacity or Space Planning

People counting provide data so that management can better understand a building’s traffic patterns, time-of-day differences, Also can provide information on how buildings, floors and spaces are actually being used.



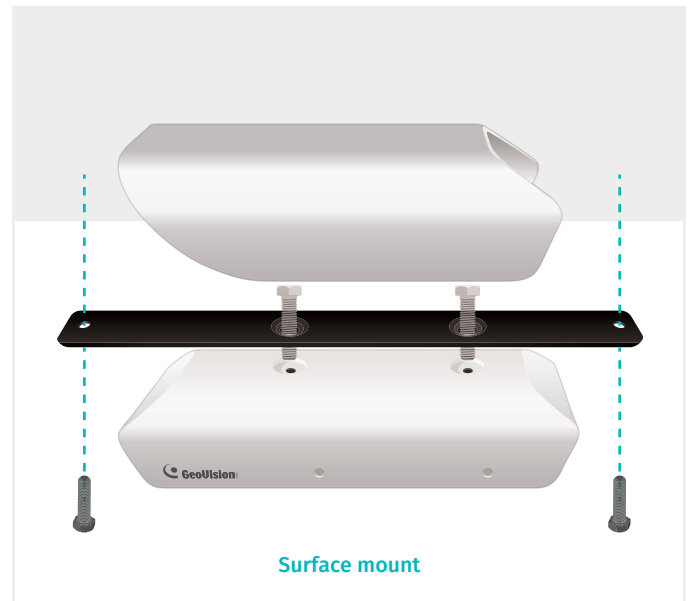
## Staff Management

Allowing a company to optimize the allocation of employees to spaces and to evaluate options.



Counts the number of people (In and Out)	High Accuracy
GV-Web Report Lite: Web interface to look up people counting data and charts	DI/DO
Data compiling and chart analysis on GV-Web Report	PoE IEEE 802.3af (One Cable Installation)
GPS positioning (Optiona) GV-GPS receiver and GV-Web Report software required	SDHC card supported

## Versatile Mounting



## Product Spec



	GV-3D People Counter V2
Depth Image Size	80 x 60 (Depth image)
Maximum Frame Rate	15 fps
LENS	Fixed lens
Angle of View	74° (horizontal)
	55° (Vertical)
	92° (Diagonal)
IR	4 Leds
Ethernet	10 / 100 Ethernet
Accuracy	Up to 98%
Power Consumption	6.24W (Max)
Local Storage	Micro SD card slot (SD / SDHC / SDXC / UHS-I, Class 10) (8 GB included)
Digital I/O	DIx1 / DO x 1 (Relay)
Interfaces	RJ45 (PoE), UART x 2 (Console ; GPS)
Power Resource	PoE (IEEE 802.3af)
Mounting	Surface Mount / Wall mount
Optimized measurement range	installation height: up to 4 M (detect range from 0.8 m 2.4 M) wide: 1.5 to 3 m
Dimension	150 x 48.5 x 37.5 mm (L x W x H)
Weight	200g
Operating Temperature	32 ~ 104 °F / 0 ~ 40 °C
Operating Humidity	20% ~ 80% (with no condensation)
Operation Environment	Indoor only
Regulatory	CE / FCC / RCM
Language (Web Interface)	English, Traditional Chinese, Simplified Chinese, Russian, French
Supported Browser	IE V10.0 above